

Concept of Operations

DRAFT

Executive Summary

Fayette County faces significant challenges in ensuring that its citizens receive timely, effective, and sustainable support for a wide range of needs, including food insecurity, employment, health concerns, trauma recovery, and shelter. While numerous organizations—governmental, faith-based, and charitable—are dedicated to addressing these issues, gaps in awareness, coordination, and long-term solutions remain.

LoveFayette seeks to bridge these gaps by acting as a central coordinating entity that enhances awareness, fosters collaboration, and mobilizes community resources to meet the evolving needs of Fayette County’s residents. This Concept of Operations (ConOp) outlines LoveFayette’s vision, operational model, key capabilities, and goals for improving community support.

Key Problems Identified

- **Unmet life needs:** Many residents face recurring issues that are either addressed temporarily or not at all due to a lack of sustainable solutions.
- **Limited awareness:** Citizens are often unaware of the available services and resources.
- **Insufficient collaboration:** Coordination between government, church, and charitable organizations can be improved to increase the effectiveness of support.
- **Dynamic needs:** As new challenges arise, a responsive mechanism is required to identify and address unmet needs swiftly.

Primary Goals

- Increase awareness of available help among Fayette County residents.
- Foster cross-referral capabilities between organizations to ensure citizens are directed to the most appropriate services.
- Encourage community involvement, providing opportunities for individuals to volunteer and contribute.
- Strengthen collaboration among various support entities to deliver unified care.
- Support organizational growth to help existing providers evolve and expand their services.
- Develop scalable, reusable software frameworks and associated processes that can be adapted by other communities facing similar challenges.

Operational Model

LoveFayette will operate as a broker and facilitator, connecting those in need with appropriate service providers. Inspired by models such as layered military command structures and commercial customer support, LoveFayette will focus on:

- Acting as a first-response assessor, routing needs to the right organizations.
- Providing a clearinghouse for resources and information, enhancing access to support.
- Offering high-level coordination to close cracks that needs might fall through.

Core Capabilities

To achieve its mission, LoveFayette will establish and maintain four primary capabilities:

1. **Organizational Awareness:** A directory of participating organizations, including contact details and service offerings.
2. **Community Event Calendar:** A centralized calendar of events to foster engagement and improve visibility for community activities.
3. **Resource Cataloging:** A continually updated catalog of informational, tangible, and human resources to address specific needs.
4. **Need Support:** Management of responses to needs where varying support may be provided:
 - o **Prayer**, viewed as foundational and appropriate to all needs.
 - o **Immediate response** for urgent, well-defined needs.
 - o **Ongoing support** through case management for long-term issues.
 - o **Mentoring**, focusing on personal and spiritual development.
 - o **Planned projects** requiring multi-disciplinary teams to achieve specific goals.

Leadership and Involvement

LoveFayette's leadership structure is designed to be flexible and scalable, ensuring that roles can evolve as the organization grows. Additionally, multiple modes of involvement will be supported to engage a diverse range of participants, including:

- The general public, who may only loosely associate with community groups.
- Independent entities, such as churches and businesses, that may initially choose to participate passively.
- Active community partners, who already engage in community support and can benefit from enhanced collaboration.

Conclusion

LoveFayette aims to create a lasting impact by uniting and mobilizing the community in Fayette County to care more effectively for one another. By fostering collaboration, enhancing access to resources, and building scalable solutions, LoveFayette envisions a stronger, more connected community. This document provides a foundational roadmap for realizing this vision, ensuring that citizens' needs are better met with support that grows in a sustainable, collaborative manner.

Table of Contents

Executive Summary.....	2
Introduction.....	5
Problems & Goals.....	6
Problems to Address.....	6
Goals of LoveFayette’s Concept of Operations.....	7
Operational Model.....	7
Capabilities and Competencies.....	10
Organizational Awareness.....	11
Community Event Calendar.....	11
Resource Cataloging.....	11
Need Support.....	12
Types of Support.....	12
Facilitating Need Support.....	13
Ensuring Oversight and Quality.....	13
Leadership Roles.....	14
Involvement Modes.....	14
Engaging the General Public.....	15
Engaging Semi-Independent Entities.....	15
Engaging Active Community Partners.....	15
Conclusion.....	15

Introduction

In today’s world, particularly in 21st century America, there exists a significant gap between the growing needs of society and the available means to provide meaningful support. Our national character has become increasingly divided, with stark contrasts between the socially connected and isolated, the highly informed and unaware, the technologically adept and the “old school,” and, most notably, between the haves and the have-nots. These divisions have exacerbated stress in many lives, often leaving fundamental human needs unmet in a culture that paradoxically isolates even as numerous options for connection exist.

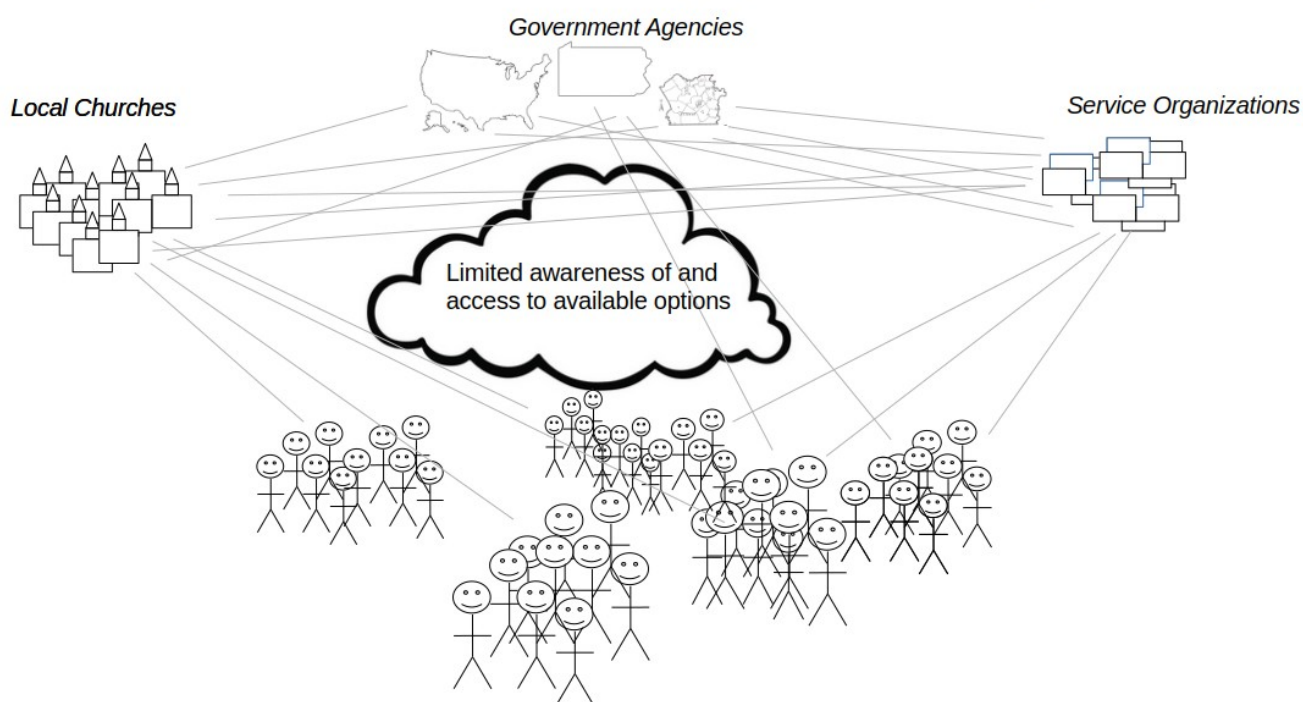


Figure 1

Those committed to care—especially those guided by faith—are called to set aside debates on the causes of these fractures and focus on addressing the immediate needs of those at risk of falling into despair. The goal is not merely to reduce suffering but to create pathways toward recovery and restoration.

LoveFayette seeks to mobilize community members, local organizations, and faith-based groups by providing coordination and support frameworks. Help is available, often hidden within our communities and ourselves. LoveFayette aims to unlock these latent resources—skills, services, and support networks—and channel them toward individuals in need, whether they are in dire circumstances or simply facing temporary hardships.

This document outlines the operational model and key capabilities that will enable LoveFayette to meet community needs effectively, providing a foundation for future processes, systems, and partnerships.

Problems & Goals

Problems to Address

Despite the presence of various support systems in Fayette County, there are critical gaps that hinder timely and effective assistance for residents facing a wide range of life challenges. The key problems LoveFayette aims to address include:

Unmet Life Needs

Fayette County citizens experience legitimate and pressing needs, including food insecurity, unemployment, health concerns, anxiety, addictions, trauma recovery, unexpected pregnancies, and issues related to shelter and safety. While some of these needs are temporarily met by existing services, there is often no clear pathway to long-term, sustainable solutions.

Lack of Awareness of Available Support

Although Fayette County offers a variety of assistance through government programs, churches, and charitable/service organizations, citizens are not always aware of the help available to them. This lack of awareness leaves many struggling to access resources that could significantly improve their circumstances.

Limited Collaboration Among Organizations

While many organizations strive to meet community needs, collaboration across government, church, and charitable/service entities could be greatly improved. Without effective communication and resource sharing, opportunities for referrals and joint problem-solving are often missed. A central organization may be required to broker and share information on available services to enhance coordination.

Need for a Dynamic Response Mechanism

Addressing community needs is a dynamic and evolving process. As new needs emerge, there must be a mechanism to bring them to the attention of organizations that can help. In cases where no organization currently addresses a specific need, a central broker may be necessary to ensure these needs are acknowledged, and, if appropriate, new programs established to meet them. LoveFayette intends to fill this critical role, ensuring that no need is left unaddressed.

Goals of LoveFayette's Concept of Operations

LoveFayette's mission is to serve as a catalyst for improving community support in Fayette County by fostering awareness, collaboration, and growth among organizations and individuals. The specific goals for this Concept of Operations (ConOp) are as follows:

Increase Awareness of Available Help

Ensure that Fayette County citizens are well-informed about the resources, services, and support systems available to them.

Enhance Cross-Referral Capabilities

Facilitate better communication and referrals among help organizations, enabling them to guide citizens toward the most appropriate sources of assistance.

Encourage Community Involvement

Provide opportunities for the citizens of Fayette County to step up, volunteer, and contribute to meeting the needs of their neighbors, fostering a culture of mutual support.

Improve Organizational Collaboration

Strengthen collaboration and cooperation across government, church, and charitable/service organizations, ensuring a unified approach to addressing community needs.

Support Organizational Growth and Adaptation

Help organizations grow and evolve to better meet the changing needs of Fayette County citizens. This includes encouraging innovation and flexibility in service delivery.

Develop Re-Usable Solutions

Build tools, processes, and frameworks that can be scaled and adapted for use in other geographic areas, spreading the impact of LoveFayette's approach beyond the county.

Operational Model

Meeting needs in today's complex and fast-paced environment presents significant challenges. LoveFayette's role can be conceptualized by drawing a parallel to established models of structured coordination, such as the warfighting model, where high-level decision-making is systematically delegated to those executing on the ground. This layered command structure—illustrated in Figure 2—enables both proactive and reactive responses to evolving needs, ensuring efficient execution of defined objectives.

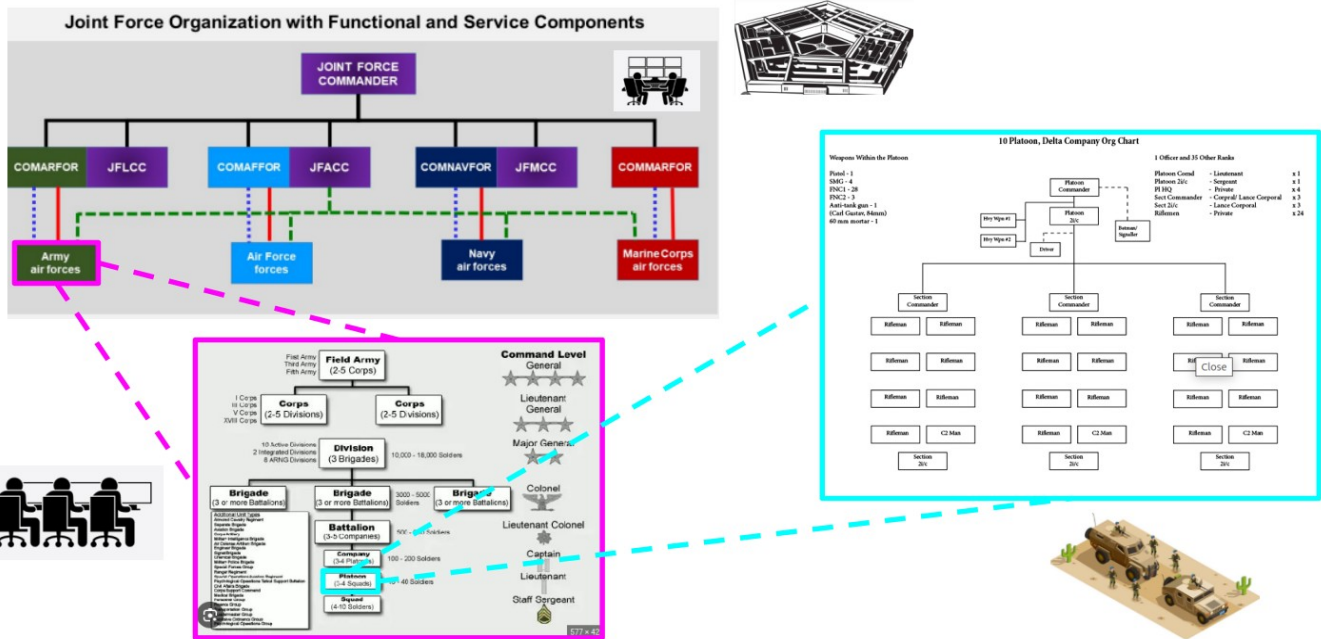


Figure 2

In this analogy, agencies (akin to the armed services) are responsible for implementing broad policies and executing specific tasks within a well-defined framework. These agencies possess the necessary resources—materials, funding, and manpower—to carry out their responsibilities in a consistent, rhythm-based manner.

At a strategic level, LoveFayette will assume a similar role by providing a broad, high-level perspective on community needs and available responses. This overarching awareness will enable coordinated action across various providers, addressing needs that might otherwise be overlooked in the midst of day-to-day operations. When individual providers are focused on their immediate tasks, LoveFayette can bridge the gap by ensuring that out-of-scope concerns are not ignored, thus maintaining a holistic approach to community care.

An alternative, more familiar analogy is the customer support model employed by large service providers. In this model, structured support helps customers navigate complex systems, ensuring efficient issue resolution. LoveFayette’s approach mirrors this by serving as a primary point of contact that assesses needs and directs individuals to appropriate providers or resources. Unlike traditional customer support, however, LoveFayette will not possess direct control over all resources or expertise. Instead, it will rely on delegation, making the layered command structure of the warfighting model more applicable while leveraging the customer service experience to create a user-friendly, familiar interaction model.

With the customer support framework as inspiration, a key starting point is to establish guiding principles that will underpin LoveFayette’s service model. While numerous frameworks for effective service delivery exist, a quick survey reveals the diversity of approaches:

- **The 4 P’s:** promptness, politeness, professionalism, and personalization
- **The 4 key concepts:** personalized, competent, convenient, and proactive
- **The 4 R’s:** reliability, responsiveness, relationship, and results
- **The 5 R’s:** response, recognition, relief, resolution, and removal
- **The 7 elements:** communication, responsiveness, empathy, personalization, and consistency

- **The 6 pillars:** personalization, integrity, expectations, resolution, time and effort, and empathy
- **The 5 key elements:** patience, engagement, knowledge, honesty, and respect
- **The 5 A’s:** awareness, appeal, ask, act, and advocacy
- **The 4 basic needs:** feeling welcome, understood, valuable, and comfortable

While these frameworks share common themes, they demonstrate that good service is not a rigid formula but rather an adaptive process guided by core principles. LoveFayette’s approach will focus less on selecting an ideal list and more on cultivating the right organizational mindset and commitment to serve.

Accordingly, LoveFayette will operate in a confederated model, where coordination and delegation are key. Autonomous support providers will be united by a shared purpose, with processes, systems, and personnel interacting to direct those in need toward appropriate resources. Rather than being hierarchically “above” these providers, LoveFayette will act as a facilitator, offering a higher-level perspective—much like an aerial view of a battlefield—to enhance connection and coordination between providers on the ground (Figure 3).

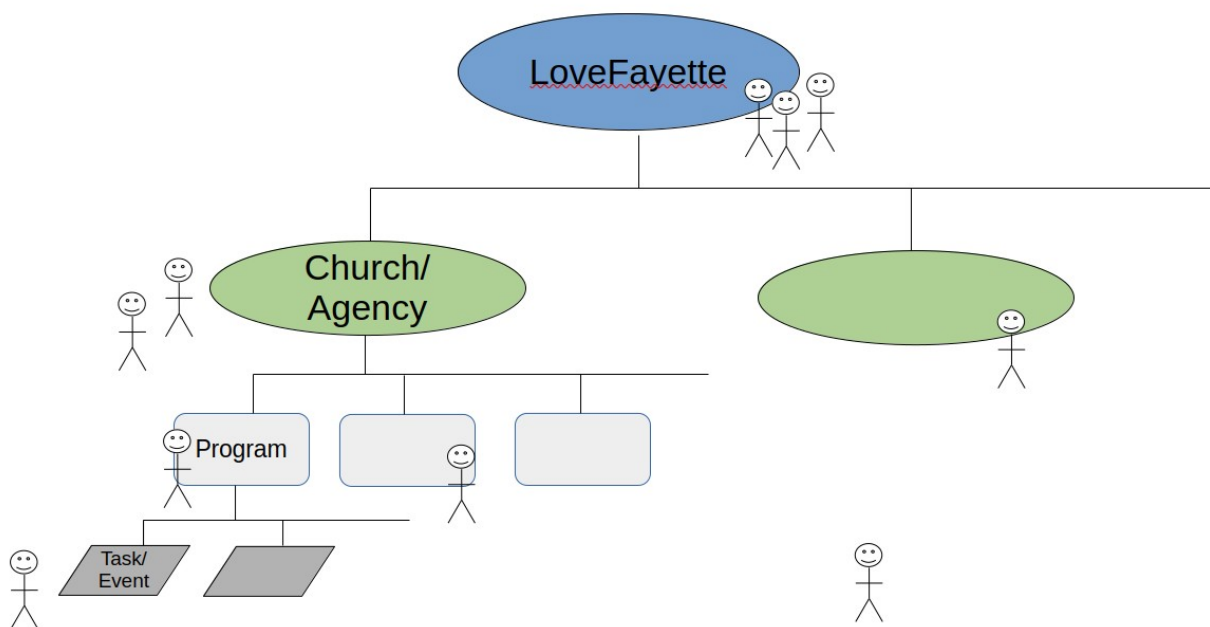


Figure 3

In this capacity, LoveFayette will serve as a clearinghouse or broker, guiding seekers through the complex landscape of available support. While the distinction between LoveFayette and the responding agents may sometimes blur, the responsibility for direct support will rest with the participating providers, who are empowered to step in and address specific needs.

Needs arise from various sources, across different levels, and at any point in time. Wherever people gather—whether individually or collectively—needs will emerge. LoveFayette will act as a first-response assessor, evaluating needs and routing them to appropriate providers. By remaining flexible and unconstrained by rigid parameters, LoveFayette will facilitate connections across organizational

boundaries, ensuring that those seeking help are directed to resources they may not have previously considered or been aware of.

Notional Need Support Variations

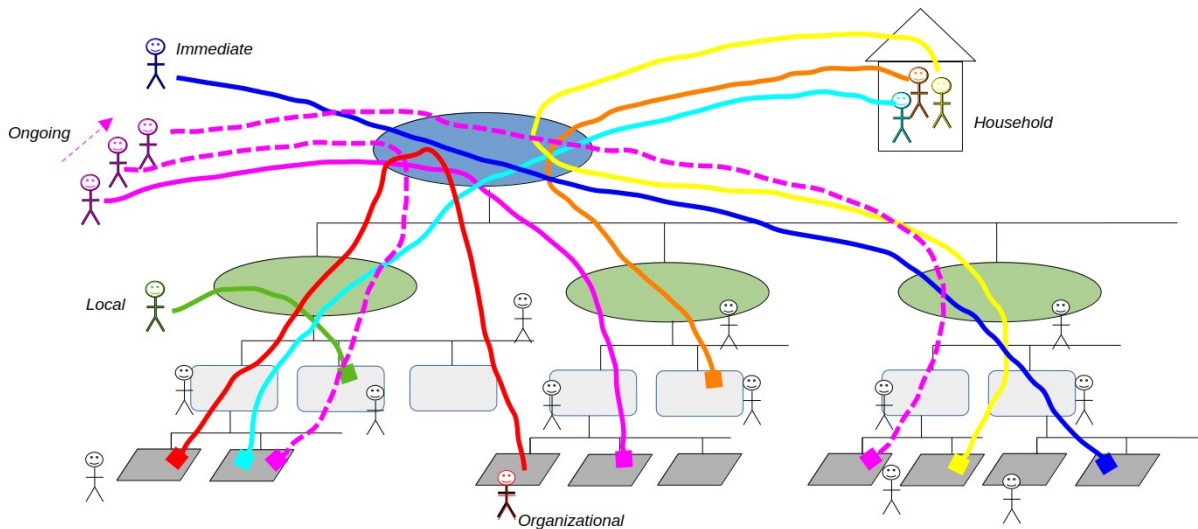


Figure 4

While the majority of needs addressed by LoveFayette will likely be personal or household in nature, the organization also aims to support businesses and other local entities as situations demand. In a closely-knit community, where members often view each other as extended family, the desire to serve transcends professional roles—whether one is a plumber, pediatrician, lawyer, or landscaper. Recognizing that smaller businesses and organizations may be struggling, LoveFayette seeks to provide assistance that can bolster the overall well-being of the county.

Capabilities and Competencies

Effectively coordinating activities across multiple agencies requires well-designed, scalable capabilities. While it may be tempting to envision highly sophisticated solutions, the Pareto principle suggests that significant improvement can often be achieved with relatively simple yet targeted investments. By providing straightforward directory and interface facilities, LoveFayette can deliver substantial value by efficiently connecting those in need with those who can provide support.

LoveFayette’s goal is to rapidly establish itself as a dynamic and reliable community resource. This will be accomplished by developing core capabilities that leverage an advanced information management system, enabling scalable and efficient support processes. Much of the work involved in responding to inquiries and coordinating services will be relatively straightforward, with systems designed to bridge existing service gaps and streamline the overall community care process.

Key capabilities at the core of LoveFayette’s operations include:

1. **Organizational Awareness**
2. **Community Event Calendar**
3. **Resource Cataloging**

These foundational features will serve as enablers for layered need support, allowing LoveFayette to build competencies and broaden its impact over time. While future expansions into more specialized services are possible, these will be driven by emerging needs rather than rigid milestones on a predefined roadmap.

Organizational Awareness

For any organization participating in LoveFayette—whether as a partner, provider, or general community entity—basic identifying information will be collected and maintained, along with general contact details. Under the guidance of an authorized organizational lead, designated staff members will be linked to their organization, with their direct contact information published as necessary.

In cases where an organization includes substructures (e.g., specific programs), these will be recorded to better convey the organization’s offerings. LoveFayette’s emphasis on program-level awareness reflects the reality that many community services are delivered through specialized initiatives rather than formal departments. Providing visibility into these programs will be key to improving support and accessibility for those in need.

Community Event Calendar

A large part of raising organizational visibility and fostering community engagement will revolve around events. Events provide opportunities for community members to join ongoing activities, strengthen relationships, and build a sense of connectedness. LoveFayette’s community event calendar will serve as a centralized resource, bringing attention to gatherings and activities that form the social fabric of the community. By sharing events across various organizations, LoveFayette can help knit together otherwise isolated segments of the population, fostering stronger interpersonal connections.

Resource Cataloging

Resource cataloging is another critical component of LoveFayette’s mission. While organizational awareness and the event calendar help connect people with providers and activities, resource cataloging focuses on the tangible and informational assets that can further support those in need.

The challenge in resource cataloging lies in balancing comprehensiveness with maintainability. On one hand, having a wide array of resources readily available is highly desirable; on the other hand, curating and maintaining such a catalog requires significant effort. LoveFayette’s strategy will be to start small—taking initial steps to catalog resources in broad areas such as reference information, local capabilities, and tangible assets—and then refine and expand based on observed utility.

1. Reference Information

Reference information may include books, articles, sermons, podcasts, songs, and scripture relevant to various life circumstances. Initially, LoveFayette will take a two-pronged approach:

- o **Layering over established metasources:** Using existing resources maintained by partner organizations to provide access to deep repositories of knowledge and guidance.

- o **Building a custom repository over time:** Collecting and organizing content deemed valuable during the course of operations. This approach ensures that the catalog grows organically in response to real-world needs.

2. Capability Cataloging

Cataloging **capabilities** involves identifying and documenting the skills and expertise of individuals and groups willing to contribute. The goal is to create a descriptive framework that captures the unique talents and interests of the community, enabling better matching of needs with available support. As the system evolves, descriptors will become more detailed and specific, covering various domains such as construction, education, counseling, legal services, and more. Importantly, capabilities will be broadly defined to include not only formal skills but also personal interests, enhancing the potential for community members to connect and collaborate.

3. Tangibles

Tangible resources—such as tools, equipment, and supplies—are a natural extension of capability cataloging. While some capabilities imply access to certain resources (e.g., a landscaper is likely to have mowers), others may not (e.g., a commercial driver’s license holder may not own a truck). Initially, cataloging tangible resources will be a low-priority effort but will remain an available feature for future expansion as needs arise.

Need Support

LoveFayette’s core capabilities are designed to support a broad spectrum of needs, helping the community in a more effective and sustainable way. Recognizing that the types of support required may vary greatly, LoveFayette categorizes needs into several broad forms. The approach taken will depend on both the preferences of the person in need and the ability to mobilize timely and effective support. These forms of support range from **prayer**, to **immediate response**, to **ongoing support**, and finally to **planned projects** aimed at achieving specific goals.

Types of Support

Prayer Support

For many, prayer is viewed as the foundation of all efforts, and it will play a central role in LoveFayette’s approach to need support. In essence, every need is a prayer need, with prayer serving as both a proactive and reactive form of support. To facilitate this, LoveFayette will implement automated systems that enable prayer dissemination and virtual prayer watches for approved needs.

While prayer often arises as a reaction to specific situations brought forward by individuals or concerned parties, LoveFayette aims to expand this by proactively engaging with community leaders to surface pressing issues. By establishing a top-down dialog that highlights key areas of concern, LoveFayette can foster a culture of proactive prayer within local fellowships. Over time, automated feedback loops will provide encouragement and surface additional needs, building stronger, ongoing relationships within the community.

Immediate Response

Many needs will require immediate attention. These are typically well-defined challenges that need resolution within a specific timeframe. Immediate response efforts will focus on deploying available resources quickly and efficiently, much like logistics management in a business context. LoveFayette will leverage automation to help streamline resource allocation, enabling rapid scaling as community engagement grows.

Ongoing Support

Some needs are more complex and require ongoing assistance over an extended period. In such cases, case management becomes essential, with dedicated providers offering continued support. This approach ensures that individuals are not just helped in the moment but are accompanied throughout their journey, addressing both immediate and evolving needs.

Mentoring

A key element of ongoing support is mentoring, which LoveFayette plans to cultivate intentionally. Mentoring relationships will vary in formality, scope, and engagement style but will serve as a vital means of long-term personal and spiritual development. Given its alignment with LoveFayette's mission and values, mentoring will be a primary focus in building up individuals and the community.

Planned Projects

Certain needs will require a coordinated, multi-disciplinary effort to achieve defined outcomes. For such situations, project management is essential to ensure tasks are identified, resourced, and completed in a structured manner. Projects may involve specialized expertise as well as general labor, depending on the nature of the task. Consistent management practices will help maintain quality and efficiency across diverse projects.

Facilitating Need Support

LoveFayette's mission is to facilitate all forms of need support by leveraging advanced yet lightweight information management systems. These systems will enable repeatable and scalable support patterns, ensuring that needs are met in a timely and efficient manner. Depending on the nature of the support, coordination may be handled directly by LoveFayette or delegated to external providers, with outcomes tracked accordingly. The overriding objective is simple: meet the need, however best accomplished.

Ensuring Oversight and Quality

Given the critical role LoveFayette will play as a support broker and facilitator, maintaining oversight is essential. Needs will be carefully vetted, and follow-up actions will be formally monitored to ensure accountability and effectiveness. LoveFayette will implement a multi-role strategy to manage and approve need submissions, ensuring appropriate oversight throughout the process.

While providers are expected to exercise due diligence in privacy and security, LoveFayette will establish oversight roles responsible for approving needs and tracking outcomes. This commitment to oversight and accountability will become a defining characteristic of LoveFayette's operational approach, ensuring that every need is met with integrity and care.

Leadership Roles

LoveFayette seeks to lead by example in elevating the standard of care across the county. How LoveFayette structures its leadership is critical—not only for facilitating collaboration among diverse participants but also for providing a scalable model of cooperative care that can be adapted by contributors.

The organizational structure outlined in Figure 5 provides a framework for allocating responsibilities to realize LoveFayette’s operational vision. While initial phases may involve individuals filling multiple roles as the organization establishes itself, this structure is designed to scale rapidly as community participation grows—whether from those seeking assistance or those offering support.

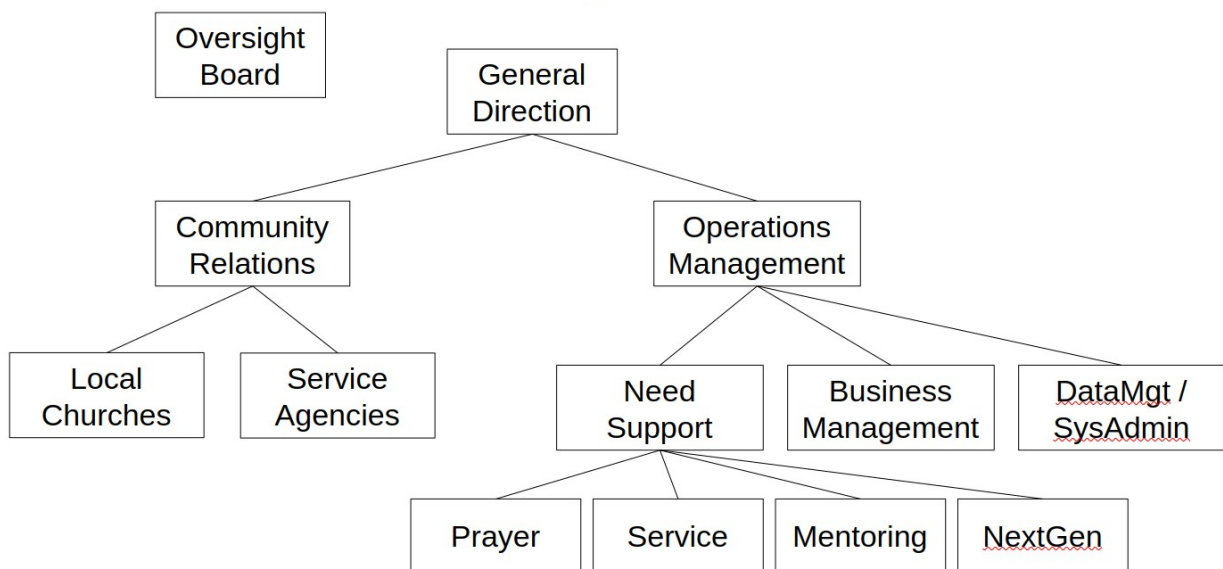


Figure 5

This flexible structure allows for varying levels of involvement to naturally evolve. Different participants—ranging from individual volunteers to organizational partners—can be assigned roles based on their capabilities and areas of focus. As engagement increases, additional levels of interaction may emerge. In some cases, informal or shadow roles may be created to handle specialized tasks, ensuring that operational demands are met without requiring immediate formal restructuring.

Involvement Modes

LoveFayette recognizes that those who may choose to collaborate in building up the county will have diverse characteristics. To accommodate this diversity, different modes of involvement for both organizations and individuals will be supported, with the expectation that participation may evolve over time. Several factors will influence the nature and depth of involvement, including demographic-driven motivations, the degree of organizational structure, the level of technological capability, and past engagement in community activities.

Engaging the General Public

A key, yet often overlooked, group in cross-organizational partnerships is the general public. Many individuals in the county lead largely independent lives, often by choice, and may only loosely associate with community groups—if at all. Whether or not such individuals seek help, LoveFayette aims to serve them by being a welcoming, reliable presence. The challenge is to reach without intruding, offering support in a way that feels approachable and non-invasive.

Engaging Semi-Independent Entities

A second category includes semi-independent entities, such as churches, businesses, interest groups, and service organizations. These entities may operate independently from much of the community's shared life but still have the potential to play a significant role. LoveFayette will engage these entities by offering them the option to join its public directory as a bridge to future interaction, without requiring an immediate commitment to active participation. Additionally, LoveFayette may proactively include publicly available entities in its directory and highlight those who opt for greater visibility.

Engaging Active Community Partners

The third group includes active community partners—organizations and groups that not only maintain a visible presence but also actively encourage and support those they serve. LoveFayette seeks to complement their existing efforts, providing additional channels for communication and support. Depending on their level of resources and structure, these partners may benefit from LoveFayette's ability to broaden their reach and enhance their operations.

- **Well-Resourced Partners:** For organizations with significant structure, resources, and technology, LoveFayette can complement their efforts by introducing new opportunities to serve and potentially providing volunteers to fill gaps in support.
- **Eager but Less-Resourced Partners:** For smaller groups with high enthusiasm but fewer resources, LoveFayette can act as an enabler, helping them contribute effectively to the community by integrating them into the broader support system. These groups can work directly through LoveFayette's platform, ensuring they remain connected and effective without being isolated.

Conclusion

In a world—and a community—facing significant challenges, LoveFayette is positioned to serve as a stabilizing and unifying force. By complementing both well-established and emerging care providers, LoveFayette will offer foundational capabilities that connect service providers with those in need. Through its organizational directory, event calendars, and resource cataloging, LoveFayette will enhance community support and enable scalable solutions for diverse needs.

As LoveFayette's operations evolve, its mission to improve community support may lead to expanded services and new approaches. Acting as a broker for a confederation of supporting groups, LoveFayette will streamline the delivery of care, ensuring that needs are met by the most appropriate providers—whether it's a large, well-equipped organization or a small local church uniquely suited to handle a specific situation.

Regardless of how individuals or groups choose to engage, LoveFayette’s confederation model offers room for all. By fostering collaboration among like-minded supporters, LoveFayette aims to enrich the county on multiple levels—physically, financially, socially, and spiritually. With a shared purpose and coordinated efforts, this network of providers can work together in harmony, guided by LoveFayette’s orchestration. In doing so, they will not only mobilize tangible resources but also spread compassion and care throughout Fayette County.