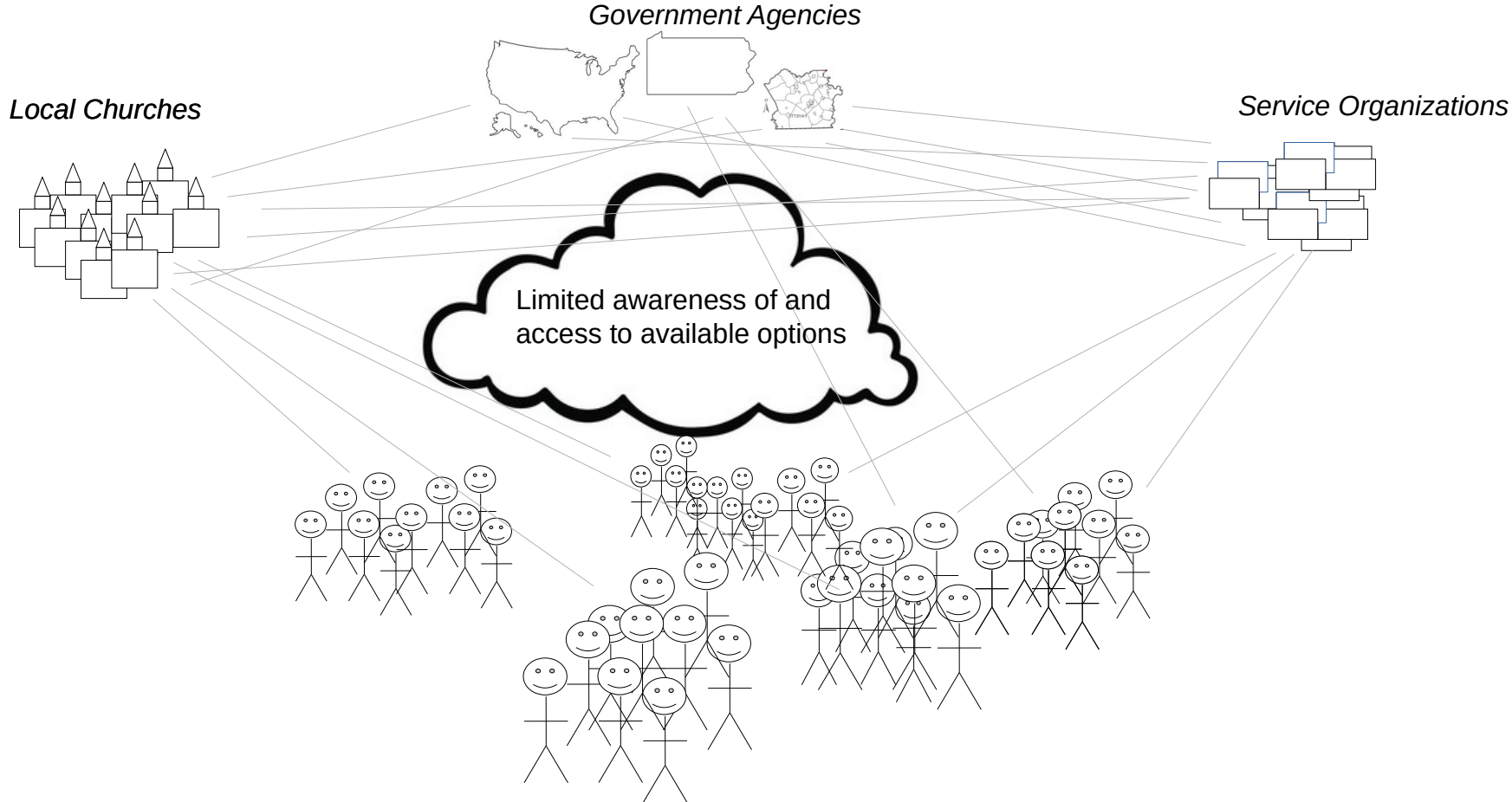


introducing  
**ICARE**

# Diabolical Situation

- Society is Shaken
  - Institutional distrust
  - Information confusion
  - Economic disparity
- People are Disconnected
  - Many with needs are unserved
  - Many who can support are untapped
    - Busy yet capable and willing

# Need Support Gap



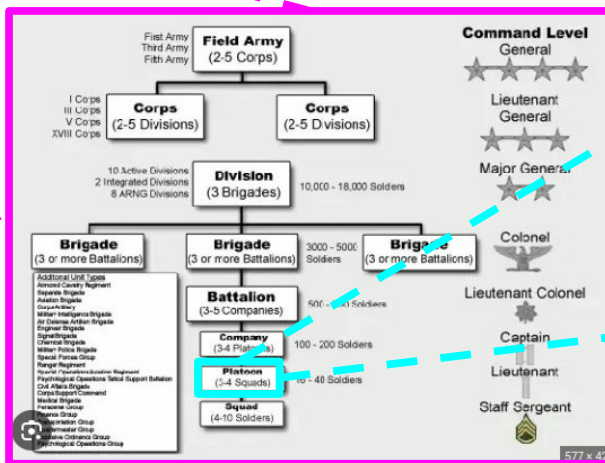
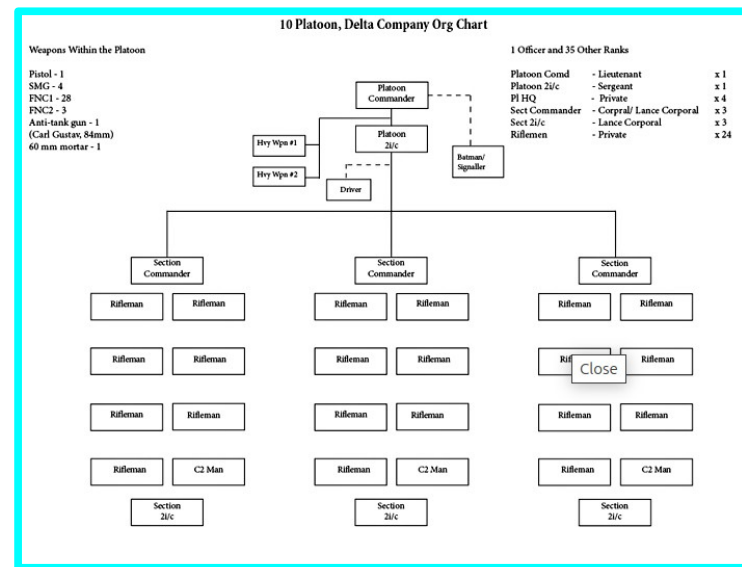
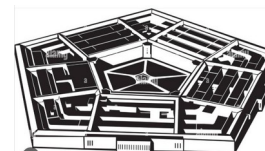
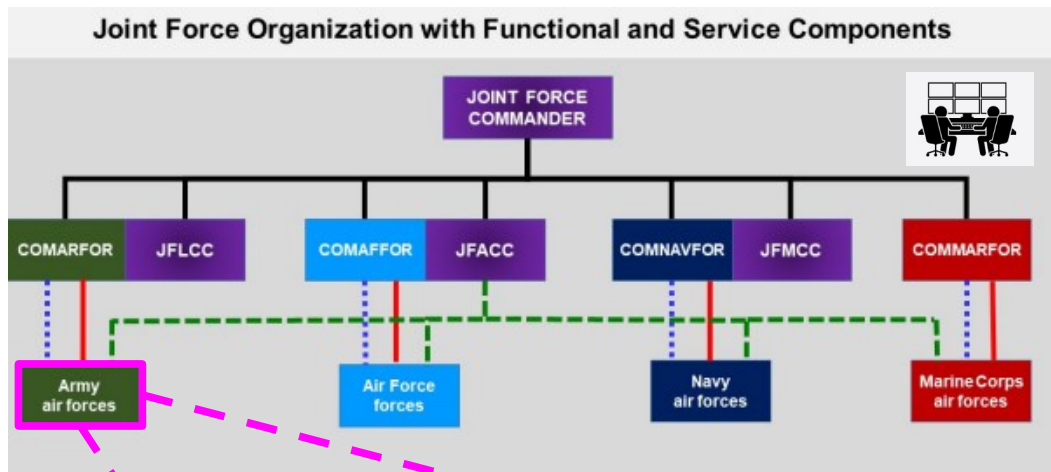
# Personal Duality

- We all have needs
  - Phase of life
  - General socio-economic circumstances
  - Unforeseen events
- We all can support
  - Prayer, dialog, action
  - Time, treasure, talents

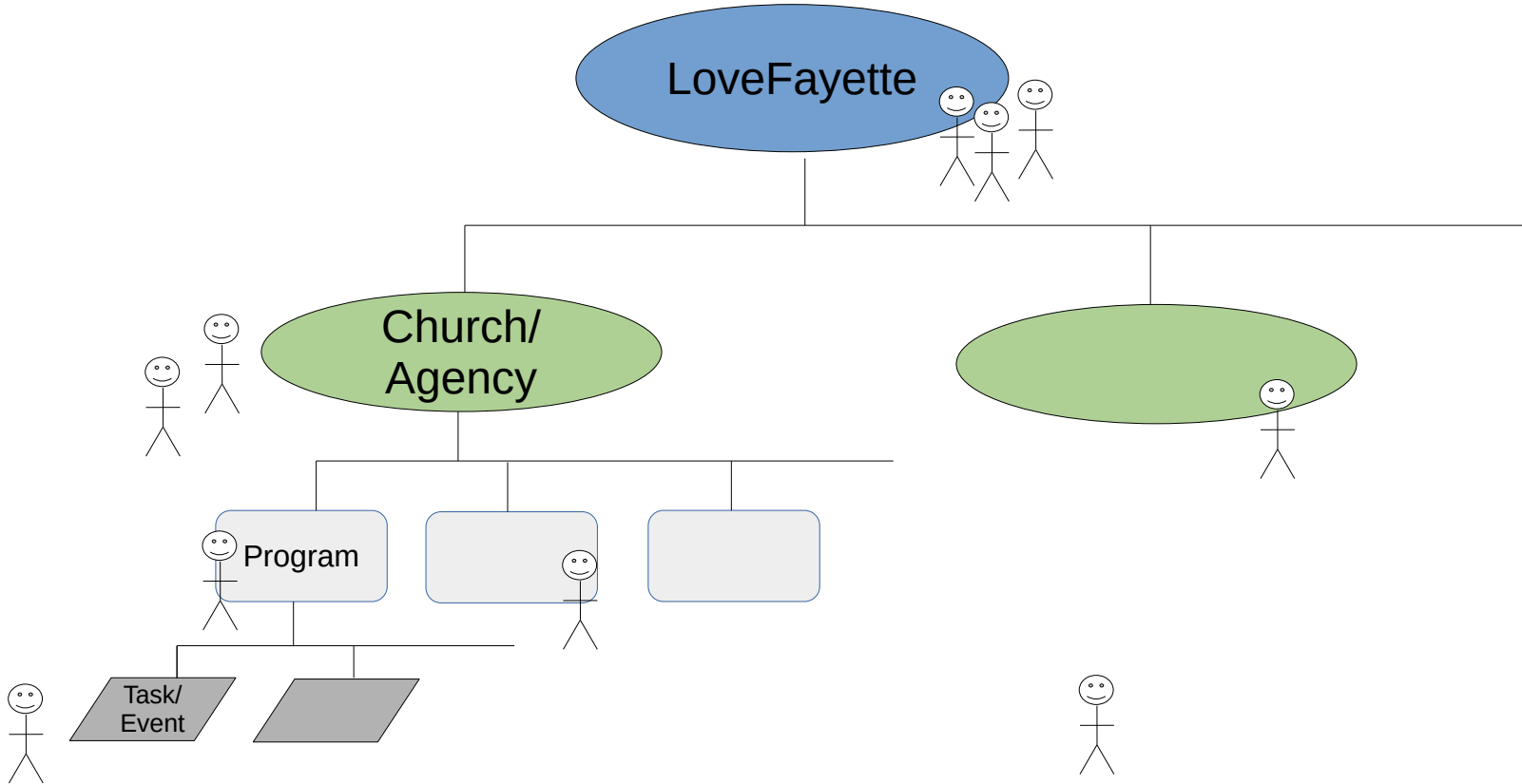
# Hierarchical Warfighting Structure



AIR FORCE DOCTRINE PUBLICATION (AFDP) 3-30



# Overarching Support



# Core Functionality

- Organization Awareness
  - Staffing, Programs, Events
- Community Calendar
  - Public, Organizational, Cluster, Personal
- Resource Catalog
  - Reference Information, Capabilities, Tangibles
- Need Support
  - Prayer
    - Proactive, Reactive
  - Care / Service
    - Singular, Project, Ongoing