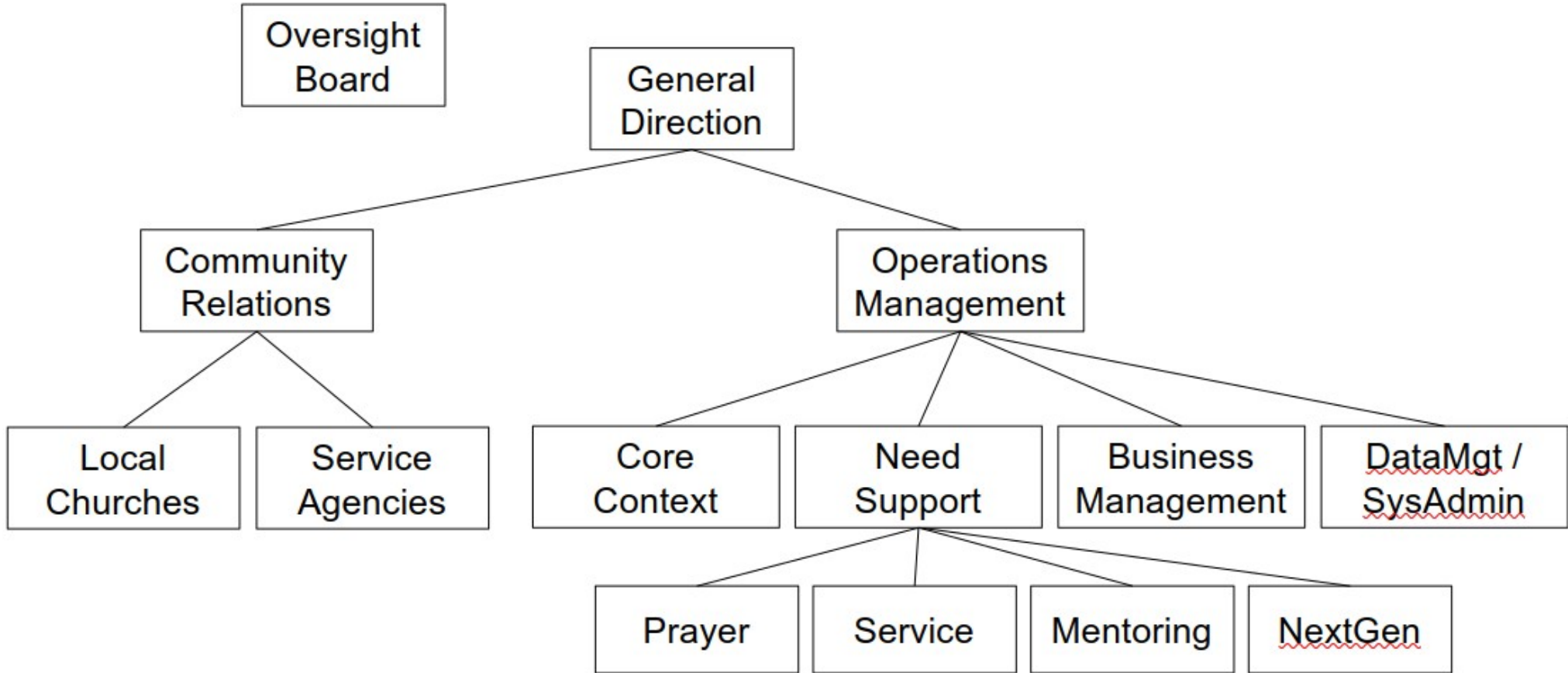


Path Forward

(“not far”)

Nominal Leadership Structure



Quad Template

Responsibilities

- What are the primary objectives

Team

- Who, by role if not name, will be working to satisfy the responsibilities

Issues/Concerns

- What are the major considerations that must be addressed

Roadmap

- What are the near-to-mid term steps to be undertaken

Oversight Board

Responsibilities

- R1
- R2
- R3

Team

- R1
- R2
- R3

Issues/Concerns

- R1
- R2
- R3

Roadmap

- R1
- R2
- R3

General Direction

Responsibilities

- Mission / objectives consensus
- Maintain momentum
- Community representation
- Role coordination
- Cultural tone

Team

- R1
- R2
- R3

Issues/Concerns

- Vision overwhelming ability to realize
- Rollout timing
- Role clarification / refinement

Roadmap

- Scope initial functionality
- Leadership launch with followup schedule
- Baseline quad charts
- Enumerate / refine working documents

Community Relations

Responsibilities

- General organization interface
 - government, business, interest groups
- Church / service agency oversight

Team

- R1
- R2
- R3

Issues/Concerns

- Overselling intent / capability
 - emphasize value added / enhancement
- Perceived “rice bowl” perturbation
- Information sharing hesitancy

Roadmap

- Contact U/B/C city councils
- Collate potential partners
 - businesses, veterans groups, fraternal lodges,

Local Churches

Responsibilities

- Leadership interface
 - involvement agreement, execution policy, socialization support
- Operational liason
 - regular task support, problem resolution

Team

- R1
- R2
- R3

Issues/Concerns

- Diverse capacity
 - staffing, technology, motivation, demographics
- Self-service vs brokered content
- Involvement suspicion
 - denominational, historical, political
- Geographic spread

Roadmap

- R1
- R2
- R3

Service Agencies

Responsibilities

- Leadership interface
 - involvement agreement, execution policy, socialization support
- Operational liason
 - regular task support, problem resolution

Team

- R1
- R2
- R3

Issues/Concerns

- Participation strain
 - thin staffing, limited funding
- R2
- R3

Roadmap

- R1
- R2
- R3

Operations Management

Responsibilities

- Manage day-to-day operations
- Ensure systems and processes adequately support primary (need support) functions
- Oversee wellness of business aspects
- Direct information management efforts

Team

- R1
- R2
- R3

Issues/Concerns

- Establishing operational rhythm with varying personnel
- Absorbing and leveraging continuously evolving system capabilities
- Navigating startup pitfalls

Roadmap

- Crawl/walk/run prioritization and definition of usage scenarios
- R2
- R3

Core Context

Responsibilities

- Preemptive repository setup
 - Organizational structure and staffing
 - Calendar of events
 - Reference information
- R2
- R3

Team

- R1
- R2
- R3

Issues/Concerns

- Where to start / stop
- R2
- R3

Roadmap

- R1
- R2
- R3

Need Support

Responsibilities

- R1
- R2
- R3

Team

- R1
- R2
- R3

Issues/Concerns

- R1
- R2
- R3

Roadmap

- R1
- R2
- R3

Prayer

Responsibilities

- R1
- R2
- R3

Team

- R1
- R2
- R3

Issues/Concerns

- R1
- R2
- R3

Roadmap

- R1
- R2
- R3

Service

Responsibilities

- R1
- R2
- R3

Team

- R1
- R2
- R3

Issues/Concerns

- R1
- R2
- R3

Roadmap

- R1
- R2
- R3

Mentoring

Responsibilities

- R1
- R2
- R3

Team

- R1
- R2
- R3

Issues/Concerns

- R1
- R2
- R3

Roadmap

- R1
- R2
- R3

Next Generation

Responsibilities

- R1
- R2
- R3

Team

- R1
- R2
- R3

Issues/Concerns

- R1
- R2
- R3

Roadmap

- R1
- R2
- R3

Business Management

Responsibilities

- Budget maintenance
- Legal / insurance coverage
- Facility usage
- Human resources

Team

- R1
- R2
- R3

Issues/Concerns

- Sparse initial funding
- R2
- R3

Roadmap

- Skeletal budget
- Basic legal agreements
 - partnering involvement, information sharing, system terms of service, facility lease
- Volunteer vetting policy

Data Management / System Administration

Responsibilities

- Administer deployments
 - Updates, access, recovery
- Maintain common information
 - Directories, reference info
- OnBoard partners
- Support users
 - Training, problems, forums

Team

- Administrator(s)
- Data Manager(s)
- User Support

Issues/Concerns

- Appropriate mining of available datasets
- Synthesis of alternative categorization taxonomies
- Tailoring system usage to limited interests

Roadmap

- Selective EOMBF ingest
- Descriptor baseline
- Pilot church / agency setup
-